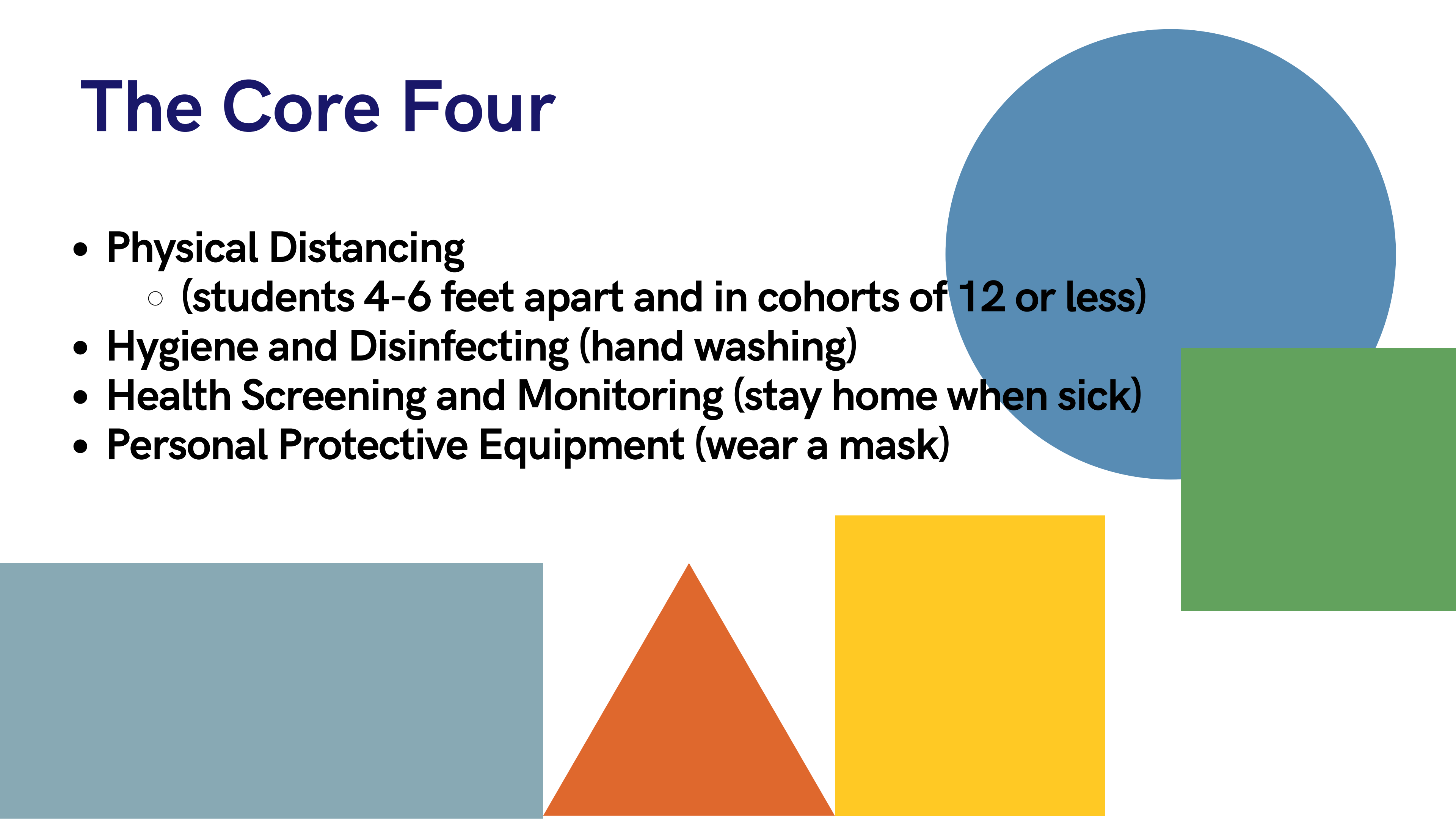




Campus Safety Information

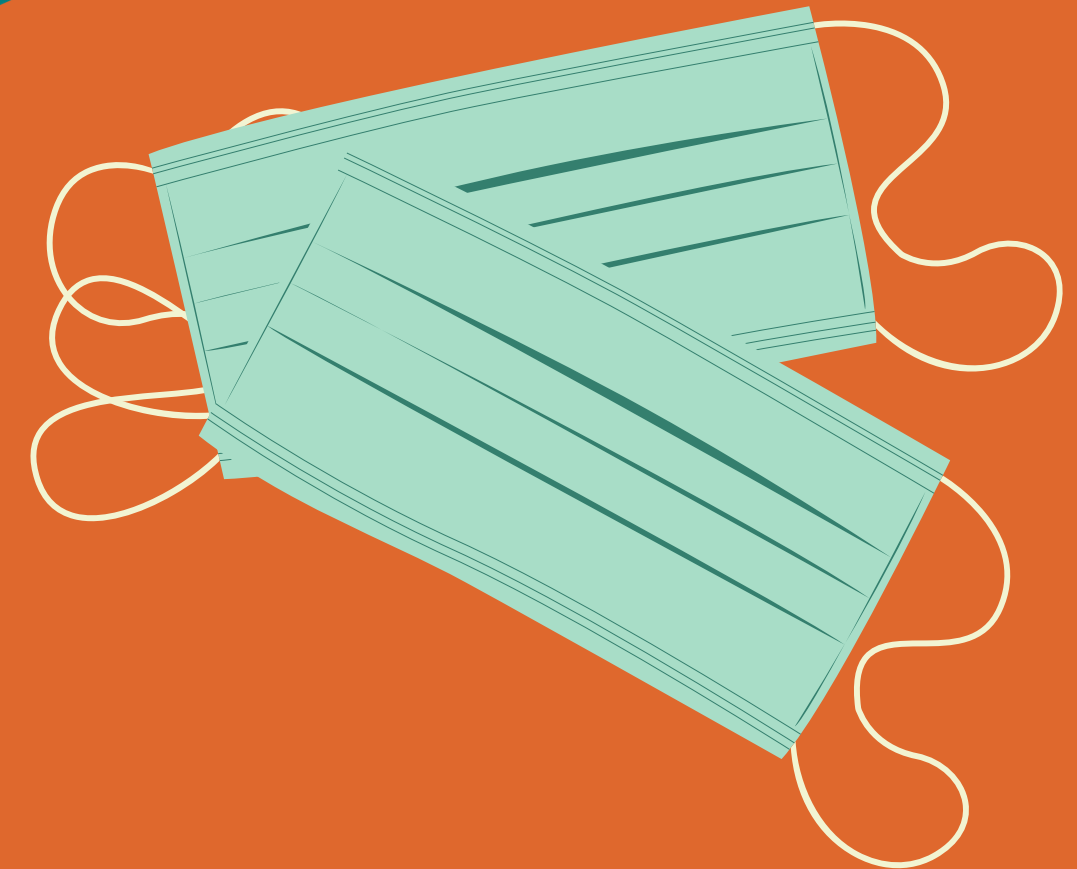


The Core Four

- **Physical Distancing**
 - **(students 4-6 feet apart and in cohorts of 12 or less)**
 - **Hygiene and Disinfecting (hand washing)**
 - **Health Screening and Monitoring (stay home when sick)**
 - **Personal Protective Equipment (wear a mask)**
- 

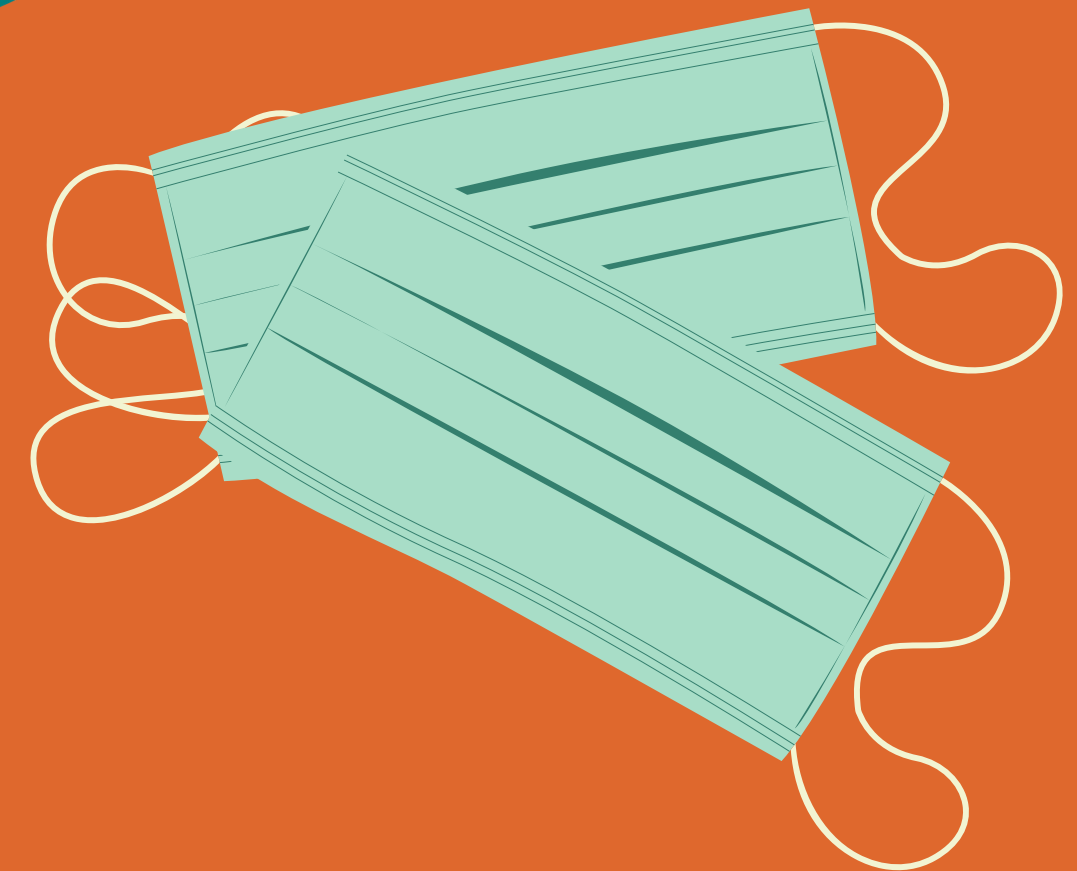
SUPPLIES

- Face masks & shields (students)
- N-95 Masks for Health Office
- Gloves (Poly) for Classroom
- Gloves (Nitrile) for Health Office
- Gowns For Health Office
- Sanitizing Mist Sprayers for custodians
- Spray Bottles for Classrooms
- A-Frames with Signage
- Signage for social distancing



SUPPLIES

- Masks, Face Shields, Gloves (staff)
- Thermometers
- Hand Sanitizer
- Check-in/out supplies
- Air Purifiers
- Plexiglass Dividers
- Disposable Masks (child & adult)



Custodial Responsibilities



- Move tables/desks
- Fill Spray Bottles with sanitizing spray
- Spray bottle in each classroom
- Designate bathrooms for cohort use
- Determine times for restroom disinfecting
- Ensure classrooms and bathrooms are stocked with soap & paper towels
- Turn off outside Drinking Fountain water.
- Cover inside Drinking Fountains/Classroom sink with tape/bag
- Determine times for disinfecting lunch tables

Custodial Responsibilities

- Refill Sanitizing Spray Bottles as needed
- Have tables and chairs ready for Check-in/out every morning.
- Frequently disinfect bathrooms, lunch tables and any other identified common areas as scheduled.
- Disinfect any areas a sick person or an individual positive with COVID -19 has been (wearing PPEs as necessary – minimum mask, gloves and safety goggles).
- Disinfect used classrooms, offices and other areas nightly.
- Clean and vacuum classrooms, offices and other areas as regularly scheduled.
- Assist with various tasks as needed.



Nurse & Health Clerk

- Identify Isolation Area for individuals who develop symptoms
- Review with other office staff procedures for when student is identified as sick.
- Organize supplies
- Isolate any student who is sick or showing COVID-19 symptoms.
- Work with nurse to determine if symptomology is consistent with a known pre-existing condition.
- Assist with Contact Tracing
- Use Nitrile gloves, N-95s and Gowns when working with a sick student.
- Assist staff with any first aid cases that are beyond their training.

Nurse & Health Clerk will be handling student medication and first aid



Staff

- If staff is sick/running a fever/have any of the symptoms they MUST stay home.
- Staff completed the JPA COVID Guidance training in September 2020.
- Must complete Health Screening On-Line each day prior to coming on campus.
- ALL staff that when working with public, must be wearing a mask, wash hands regularly and follow physical distancing guidelines (this includes during lunch)



Thank You.

**STAY
SAFE!**

